

Biologically-inspired Robots for Stage Performance

by

Wei Dong

Bachelor of Science, Applied Physics
Nanjing University of Science & Technology, 2000
Master of Engineering, Manufacturing
Massachusetts Institute of Technology, 2006

SUBMITTED TO THE PROGRAM IN MEDIA ARTS AND SCIENCES,
SCHOOL OF ARCHITECTURE AND PLANNING,
IN PARTIAL FULFILLMENT OF THE REQUIREMENTS
FOR THE DEGREE OF

MASTER OF SCIENCE IN MEDIA ARTS AND SCIENCES
AT THE
MASSACHUSETTS INSTITUTE OF TECHNOLOGY

SEPTEMBER 2010

© 2010 Massachusetts Institute of Technology
All rights reserved

Signature of Author:

Program in Media Arts and Sciences
August 6, 2010

Certified by:

Tod Machover
Professor of Music and Media
Program in Media Arts and Sciences
Thesis Supervisor

Accepted by:

Pattie Maes
Associate Professor of Media Technology
Chair, Departmental Committee on Graduate Studies
Program in Media Arts and Sciences

Biologically-inspired Robots for Stage Performance

by

Wei Dong

Submitted to the Media Laboratory
on August 15, 2010 in Partial Fulfillment of the
Requirements for the Degree of
Master of Science in Media Arts and Sciences

ABSTRACT

Stage performances present many challenges and opportunities in the field of robotics. Onstage robots not only have to function flawlessly, they must interact convincingly with their human counterparts and adhere to a rigid timeline. The scope of this work is to create set pieces that look and behave like organic entities for the production of Tod Machover's new opera, *Death and the Powers*. With a set of design rules and techniques, I have developed the mechanical and control systems, including their interactive behavior, for several performance-ready robots. A six-legged walking robot and transformable robot were first built to verify the adopted design methodology prior to the prototyping of onstage robots. In addition, the robots were certified as performance-ready according to four criteria: the visual appearance, the overall functionality, the quality of movement, and the fluency of human-robot interaction. Two robots were successfully built and tested for use in the opera of *Death and the Powers*.

Thesis Supervisor: Tod Machover
Title: Professor of Music and Media

Biologically-inspired Robots for Stage Performance

by

Wei Dong

The following people served as readers for this thesis:

Thesis Reader:

Cynthia Breazeal
Associate Professor of Media Arts and Sciences
Program in Media Arts and Sciences

Thesis Reader:

Alex McDowell, RDI
Production Designer
Visiting Artist
MIT Media Laboratory
Adjunct Professor
School of Cinematic Arts
University of Southern California

ACKNOWLEDGEMENTS

The author wishes to express sincere appreciation to Professor Tod Machover for his assistance in defining and solving the problem. He not only explained a lot of concepts to the team, but more importantly encouraged us to explore new approaches. He always made time to meet with me, and kept my work on the right track.

Thanks to Professor Cynthia Breazeal and William J. Mitchell for inspiring me, providing reference materials, and taking the time to review my thesis. Thanks to Alex McDowell for taking the trip all the way to Boston to review the progress and to point out the areas that needed improvements.

Thanks also to my labmates who always supported me throughout the project. They are Andy Cavatorta, Bob Hsiung, Elena Naomi Jessop, Noah Feehan, Paula Countouris, and Peter Torpey. They are the driving force behind the problem solving and robot development efforts. Without them, my project would have fewer results to provide.

TABLE OF CONTENTS

CHAPTER 1 INTRODUCTION.....	7
1.1 GENERAL BACKGROUND.....	7
1.2 THE OPERA – <i>DEATH AND THE POWERS</i>	8
1.3 OBJECTIVE AND SCOPE.....	8
1.4 THESIS OUTLINE.....	9
CHAPTER 2 METHODOLOGY.....	10
2.1 INTRODUCTION.....	10
2.2 BIOLOGICALLY-INSPIRED ROBOTS	10
2.3 DESIGN WORKFLOW	11
2.4 MECHANICAL SYSTEM	12
2.5 ELECTRICAL SYSTEM	14
2.6 OTHER CONCERNS	15
2.7 SUMMARY	16
CHAPTER 3 A WALKING ROBOT – MEI-MEI.....	17
3.1 INTRODUCTION.....	17
3.2 MECHANICAL SYSTEM	17
3.3 ELECTRICAL SYSTEM	21
3.4 LESSONS LEARNED.....	22
3.5 SUMMARY	24
CHAPTER 4 A TRANSFORMABLE ROBOT – SOFA	25
4.1 INTRODUCTION.....	25
4.2 MECHANICAL SYSTEM	25
4.3 ELECTRICAL SYSTEM	31
4.4 LESSONS LEARNED.....	35
4.5 SUMMARY	36
CHAPTER 5 IMPLEMENTATION OF STAGE ELEMENTS.....	37
5.1 INTRODUCTION.....	37
5.2 LIGHTING	37
5.3 VISUAL EFFECTS	38
5.4 SOUND EFFECTS	40
5.5 SUMMARY	41
CHAPTER 6 CONCLUSION AND FUTURE WORK.....	42
REFERENCES	46
APPENDIX A FIRMWARE OF SOFA CONTROLLER	48
APPENDIX B FIRMWARE INTERFACING WITH ACCELEROMETER	53
APPENDIX C CIRCUIT DIAGRAM OF LED CONTROL BOARD	57

LIST OF FIGURES

FIGURE 2.1 PRODUCT DESIGN WORKFLOW	12
FIGURE 3.1 LEONARDO DA VINCI'S MECHANICAL LION AND THEO JANSEN'S BEACH ANIMALS ..	18
FIGURE 3.2 KINEMATIC ANALYSIS OF FOUR-BAR LINKAGE.....	19
FIGURE 3.3 ROBOT DRIVEN SYSTEM.....	20
FIGURE 3.4 MEI-MEI ROBOT AND ITS LEGS	20
FIGURE 3.5 PID ALGORITHM USED IN POSITION CONTROL.....	21
FIGURE 4.1 DESIGN CANDIDATES OF BIOLOGICALLY-INSPIRED ROBOTS	26
FIGURE 4.2 DETAILS OF DESIGN CANDIDATE NO. 6.....	27
FIGURE 4.3 COMPUTER GRAPHIC MODEL OF THE SOFA.....	27
FIGURE 4.4 SCALE MODEL OF THE SOFA ROBOT	28
FIGURE 4.5 GEOMETRY SKETCH DRAWING OF THE SOFA ROBOT	29
FIGURE 4.6 ANSYS ANALYSIS OF TOP PLATE	30
FIGURE 4.7 RENDERING MODEL AND FULL-SCALE PROTOTYPE OF THE SOFA ROBOT.....	31
FIGURE 4.8 DRIVING WAVES FOR ROTATIONAL MOTION.....	32
FIGURE 4.9 MEASUREMENT ERRORS OF THE ACCELEROMETER	34
FIGURE 5.1 SOFA ROBOT WITH ITS INTERNAL LIGHTING	38
FIGURE 5.2 VISUAL EFFECTS OF THE PHYSICAL COMPUTING ROBOT TRACKING INSTALLATION	39
FIGURE 5.3 PROTOTYPE OF A TUNABLE KALIMBA	41
FIGURE 6.1 CONTROL ARCHITECTURE OF A THEATRICAL ROBOT	43

CHAPTER 1

INTRODUCTION

1.1 General Background

Robots have been used on stage as reactive sculptures, as musical instruments, and as actors for years. The earliest example of robotic elements appeared in a performance is *Kyldex*, produced by Schöffner *et al.* in 1973. It consisted of five cybernetic sculptures that danced with a ballet corps, while light effects changed the performance space in combination with mobile projection surfaces, all of which reacted to music [1]. Over the past few decades, Trimpin had developed many methods in integrating sculpture and music, and interfacing computers with traditional acoustic instruments [2]. In 2006, Weinberg *et al.* built an anthropomorphic mechanical percussionist interacting with live players [3]. Since then robots have attracted a lot of media attention all around the world for their human-robot artistic collaboration on stage [4].

These robots are far from perfect, they are much more feats of pre-orchestrated choreography rather than true interactive performances. They only deal with extremely simple behavior, such as playing acoustic instruments in a collaborative manner, not convincingly assume or display different personalities through their behavior and motion. Although some productions, such as *Heddatron* [5], attempted fully teleoperated robots, they were essentially complex puppets that do not possess independent/autonomous abilities.

To address these problems, a robotic desk lamp was built in the Personal Robots group at MIT Media Laboratory, and starred alongside two human thespians in a short play titled *The Confessor* in 2007 [6]. Hoffman *et al.* developed a hybrid-control system for puppeteering a robotic actor, which combined reactive expressive gestures and parametric behavior with a point-of-view eye contact module. This robot control system was a great success for two reasons. First, it enabled a single operator to puppeteer the

robot's full range of behavior. Second, it allowed for the gradual replacement of its human-controlled modules with autonomous subsystems [7]. However, tuning parameterized movements remains a challenging and time-consuming process.

1.2 The Opera – *Death and the Powers*

Death and the Powers, by composer and creative director Tod Machover, is a new opera that incorporates technological, conceptual, and aesthetic innovations to present a science fiction odyssey.

The opera is a story of life and death, immortality and the race to establish a life's work in perpetuity, love and war, and all the unascertained truths of human existence. The main character, Simon Powers is a successful and powerful businessman, who wants to go beyond the bounds of humanity. He invented the System, a human organism material experiment that investigated the transduction of human existence into other forms. Upon his death, he enters the System and transcends his human form. Later, the System makes everything onstage, such as his library and his furniture, to come alive, to become a new version of himself, and to interact with other characters in omnipotent and familiar ways.

1.3 Objective and Scope

The scope of this work is to create moving furniture (e.g., workbench and sofa) and endow them with interactive behavior structured around scenes, beats, and actions for the production of Tod Machover's new opera, *Death and the Powers*.

This work includes designing robots onstage with futuristic appearances and innovative locomotion patterns, and showing these non-humanoid robots having meaningful and convincing interactions with human actors. The design challenge herein is to meet these

requirements with limited degree of freedoms (DOFs) in robot kinematics and relatively simple stage elements compared to what human actors have.

This thesis will be focused mainly on the design of robot hardware systems. The robot control system will be a hybrid of full autonomy and teleoperation systems according to Goodrich's classification of degree of autonomy [8]. Briefly, an operator will drive a robot to its standby position and puppeteer its full range of behavior. The robots will only be switched to autonomous mode in some predetermined scenarios. In autonomous mode, the robot's control system will adopt a pre-animated gestures and sequences that will synchronize with the dynamic rhythm of live performance.

1.4 Thesis Outline

This thesis comprises six chapters. Chapter 2 discusses related technologies in relevant fields, such as product design and robotics, etc. This chapter introduces the concept of biologically-inspired robots, and then presents the possible methods, tools, and devices that can be employed in the development of these robots.

Chapter 3 and 4 present two biologically-inspired robots made for the opera. These chapters describe the design and implementation of their mechanical, electrical and control systems.

Although the content of Chapter 5 is relatively separated from the discussion of biologically-inspired robots, it is a piece of important review in the theatrical context. The design of lighting system and some experimental works on sound/visual elements for the robots were also discussed in this chapter.

The final chapter concludes the robot performance according to four criteria and discusses the potential applications of these robots. Furthermore, future research directions are proposed along with the implications of biologically inspired approach.

CHAPTER 2

METHODOLOGY

2.1 Introduction

Designing biologically-inspired robots requires an understanding of biological models as well as the advancements in analytical modeling, numerical simulation, and physical implementation of the related technology. This is a multidisciplinary research area, which involves materials, actuators, sensors, structures, control, intelligence, and autonomy. The recent developments in this field and its related disciplines as well as the technical challenges and trends in biomimetic robots can be found in an excellent reference book *Biologically Inspired Intelligent Robots* [9] written by Yoseph Bar-Cohen and Cynthia Brezale.

During the development of the robots, I also bring to this work my previous experience and research interests drawing on my background in manufacturing, sensor fusion, and mechatronics: the methods in product design are in the creation of the robots; Finite Element Method (FEM) in structural mechanics and numerical simulation in kinematic analysis are implemented during the low-level design of the mechanical system; state-of-the-art devices, such as Microelectromechanical systems-based (MEMS) sensors and Light-emitting Diode (LED) lighting, are used to drive, to control, and to illuminate the robots. In one way or another, all of these have contributed to the creation of robot furniture.

2.2 Biologically-inspired Robots

Throughout history, humans have sought to mimic the appearance, functionality, and longevity, as well as the cognitive and adaptive processes of living creatures. As far back as the ancient Greeks, the idea of lifelike machines appears in Homer's *Iliad*. As technology advanced, people began to actually build these machines. Several examples of historical mechanical automata can be found in reference [10]. Leonardo's mechanical

lion in 1515 and Vaucanson's mechanical duck in 1739 are two remarkable examples among them.

In late 1970s, biologically-inspired robots became more feasible with the understanding of biomimetics and the fast developments in computer technology. As a result, modern autonomous robots inspired by myriad creatures ranging from insects, to fish, to reptiles, to birds, to mammals, including humans are becoming more lifelike in their materials, their morphology, and their movement [9]. In addition, the advancement in microprocessor technology to have high computational speed, large memory, wide communication bandwidth, advanced control algorithms, and effective software tools further humanized the art of robotics with a biomimetic brain. These advancements led to the development of sophisticated robots and a significant expansion of the possibilities to emulate biological systems.

2.3 Design Workflow

What kind of robot do we want to make? This is an important and critical question that has a significant impact at the conceptualization stage influencing the choice and use of materials, mechanical design logic and execution, and the portrayal of robot itself.

Product development methodology was adopted for robot prototyping [11] and it turned out that it works well in designing biologically-inspired robots for stage performance. The general product design work flow is presented in Figure 2.1.

Prior to the product development process is the product planning phase, in which a designer identifies the opportunities, allocates the resources and sets up the milestones, completes the pre-project planning, and defines the project mission. The second step is about identifying customer needs. In this phase, I interviewed the creative team of the opera, prioritized the robot requirements in a hierarchical structure, allocated a weighting on each requirement, and reflected on the process and its outputs.

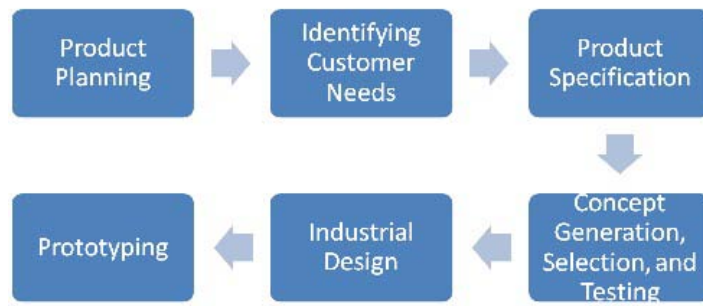


Figure 2.1 Product design workflow

The third phase has two outputs: they are the design target and final specification. The design target is defined by the hierarchy and evaluation benchmarks on customer needs, while the final specification is a refined specification based on the selected concept, feasibility testing, technical modeling, and trade-offs.

Subsequently, several design concepts were generated through the external (e.g., literature review, patent search) and internal searches (individual discussion, brain storming sessions). The best concept was selected based on an evaluation matrix, which has criteria, reference concepts, and weightings. Industrial design methods, such as sketch modeling and storyboarding [12], were used to communicate with the opera’s creative team.

Design methods during the prototyping phase will be discussed in sections 2.4 and 2.5, respectively. Other concerns such as human factors, visual, tactile, safety and convenience criteria will be discussed in section 2.6. The detail implementation of above-mentioned methods will be presented in Chapters 3 and 4.

2.4 Mechanical System

The acquisition of useful engineering knowledge from studying living creatures is not easy. Their shapes and locomotion patterns are determined by a large number of factors. To extract the contributions of desired factors from their large-scale systems requires not

only careful observations but also many experiments in both mechanical and electrical systems. It should be mentioned that a direct engineering application based on a biological approach is often difficult due to the constitutive elements of a biological system, such as muscular and neural systems, that are very different from ideal engineering elements, which can be utilized by man. This difference needs to be kept in mind throughout the low-level design phase.

After the selected concepts are approved, three essential tasks (analytical modeling, numerical simulation, and engineering drawings) will be performed in the mechanical design phase. Analytical modeling serves as a solid foundation for understanding and verifying the driven mechanism and locomotion patterns of the robots. For example, the joint geometry and kinematics, energetic aspects of locomotion, and analytic representation of muscle line of action.

However, solely using analytic model may not be adequate because of the complexity and dynamics in any robot system. As a result, structural and kinematic analyses with disturbance factors are usually performed in numerical simulation software. In this work, MSC Adams was used to test the kinematic model; SolidWorks was used to test the assembly interference; ANSYS were used to perform FEM analyses on critical robot components. Engineering drawings can be done using either of these techniques: classic drafting tools, two-dimensional (2D) (e.g., AutoCAD) or three-dimensional (3D) computer software (e.g., SolidWorks, Siemens NX mechanical design tools).

Among the physical hardware, actuators use a variety of approaches including pneumatic, hydraulic, electrical actuators, electromagnetic motors, and artificial muscles. Their driven mechanism also differs from each other, ranging from direct drive, to gear/chain/belt drive, to cable drive, etc. In their seminal paper of biologically-inspired actuators, Hunter *et al.* compared different types of actuator technologies for robots [13]. This paper serves a source of guidance in choosing actuators based on their characteristics, mechanical properties, and application requirements. Due to the rapid progress on manufacturing

technologies, novel actuators have become more affordable to research applications. In this thesis project, low-cost electrical linear actuators were used in the Sofa robot.

2.5 Electrical System

The electrical system—the sensors, communication modules, control unit, and power supplies—enables robots onstage to perform as characters and interact with human actors. Pratt reviewed physical hardware suitable for biologically-inspired robots [9]. Even since then, plenty of new components and novel methods have become available with the advent of emerging technologies. Here, the thesis does not intend to summarize all of them but to discuss two components that have been widely used recently.

In our work, we used MEMS-based accelerometers to measure the tilt angles of robot segments. Rigid body motion in the 3D space can be described using 6-DOF information (three translational and three rotational DOFs). A common solution is to use precision potentiometers or optical encoders for measuring rotational angles. Some benefits of these methods are high accuracy and fast response. However, due to the installation of mechanical attachments, the robot becomes larger and heavier. In addition, these methods are sensitive to surrounding distortions, such as supply voltage drift, light and temperature changes, etc. Here I chose MEMS-based accelerometers because they are standalone and capable to take accurate measurements when robot parts are stationary or moving slowly. The technical details about the implementation will be presented in Chapter 4.

Another new technology used in this work is the ZigBee wireless network. ZigBee is a specification for a suite of high level communication protocols using small, low-power digital radios based on the IEEE 802.15.4-2003 standard for wireless personal area networks (WPANs). The protocol defined by the ZigBee specification is intended to be simpler and less expensive than other WPANs, such as Bluetooth. Its data rate is relatively low compared to Bluetooth but enough for sending and receiving control signals to the furniture robot. It was chosen for the project because of its low cost, long

battery life, and secure networking. The technical details about the implementation will be presented in Chapter 4 as well.

Other factors that should be taken into consideration are Radio frequency (RF)/Electro-Magnetic Radiation (EMR) constraints, thermal constraints, and battery life constraints. Considering the possible presence of other wireless devices in the performance venue, I use the 2.4 GHz ZigBee network; electrical devices are also deactivated when not working; heat sinks are added onto motor drivers and LED lighting boards.

2.6 Other Concerns

There are some other concerns in the theatrical context:

1. Simple vs. Complex: general design principle states that simplicity should be a key goal and unnecessary complexity should be avoided. This can bring a lot of benefits (e.g., easy to manufacture and to maintain). On the other hand, the robots need a certain level of complexity to impress the audience, to perform their tasks and to coordinate with narrative and musical materials in the opera. It is a time consuming but necessary process for a designer to strike a balance between ease of manufacture and level of complexity. The tradeoffs that are made will be presented in the lessons-learned section in Chapters 3 and 4.
2. Large vs. Small: onstage robots differ from home entertainment robots or industrial robots, not only because of the differences in their applications but also their sizes. They cannot be too small since the audience need to watch them over distance. On the other hand, the increase in size usually results in increased weight and may also decrease their structure stiffness. It is the designer's responsibility to find the tradeoff.
3. Noise level: every opera is a unique audio and visual experience. It is very important to control the noise at a reasonable level. This can be done with a careful design in

the mechanical system. For example, changing the robot driving mechanism from gear to belt or cable can dramatically reduce the noise. If a designer cannot find any affordable way to do that, he may want to use the sound as a drama or theatre element.

4. **Materials:** when choosing the construction material, we have to consider the role of the robot character. In our design, these robots are furniture in the room, so they need to stay consistent with the decoration style of the house. The lighting on stage may also affect the appearance of the robots. It is good to have a material library on hand and to do some field research at the theater.
5. **Safety:** an emergency stop is a must on both software and hardware sides of the robots. There is no exception to Asimov's three laws of robotics.

2.7 Summary

In this Chapter, I reviewed the concept and examples of biologically-inspired robots, and discussed how the processes of product development can be applied into the design and implementation of robots. I also discussed design methods and hardware components which can be used in mechanical and electrical systems. Theatrical factors were discussed in section 2.6 and will be continually discussed throughout the thesis. Detailed information will be presented in Chapters 3 and 4.

CHAPTER 3

A WALKING ROBOT – MEI-MEI

3.1 Introduction

Stage performances present many challenges and opportunities in the field of robotics. This thesis project aims at a family of furniture robots that look and act like organic entities for the production of Tod Machover's new opera, *Death and the Powers*. The first robot, called Mei-Mei, is a six-legged walking robot that was developed in the lab as a moving workbench. Its design was inspired by a Theo Jansen mechanism in which a rotational movement is converted to a walking motion through bar linkages. With six legs driven by two separate motors, it can move forward, backward, and turn around with differential steering control. The robot is fully teleoperated using a RF remote controller and RoboteQ's AX 1500 motor controller.

3.2 Mechanical System

The proposal for building the Mei-Mei robot was an accident. It was in a group meeting in May 2009 when Tod first talked about his idea of having moving furniture in the opera. At that time, I almost finished the mechanical design of the chandelier, another robot element onstage and tried to contribute to the opera with something new. So, I jumped into the work and wanted to have a fruitful summer ahead.

When working on this robot, I did not realize that the product development methods can be applied to the design of stage robots. So, I started with a literature review in architecture, zoology, visual art, and robotics. My inspirations came from two remarkable works: Leonardo Da Vinci's mechanical lion and Theo Jansen's beach animals (see Fig. 3.1). In 1515 Leonardo built his famous self-propelled lion that reportedly walked from its place in the room and opened its breast full of lilies, presenting them as a token of friendship from the Medici to Francis I, King of France. More recently, Theo Jansen, a

Dutch artist and kinetic sculptor, built large works that resemble skeletons of animals and are able to walk using the wind on the beaches of the Netherlands. The movement of these robots looks elegant and has a quality of living creatures. So, I decided to build my robot based on their works.



Figure 3.1 Leonardo Da Vinci's mechanical lion (left) and Theo Jansen's beach animals (right) (adopted from [14, 15])

When it comes to mechanical structure, both robots share a common element: the four-bar linkage. Since it will also be used in the Mei-Mei robot, I did the analytic modeling on the structure using forward kinematics and drew the trajectory envelope of its end effector. In forward kinematics, the three rotational angles (γ, α, β) are known and used to define the position of end effectors $(X_{end/1}, Y_{end/1}, Z_{end/1})$. In Fig. 3, L_1 and L_2 are the length of the upper and lower arms. The equation for the end effector can be obtained by applying trigonometric properties to four-bar linkage. In the plane of the four-bar linkage, there is,

$$\begin{Bmatrix} x_{end/1} \\ y_{end/1} \\ z_{end/1} \end{Bmatrix} = \begin{bmatrix} O_1D & 0 & 0 \\ 0 & O_1D & 0 \\ 0 & 0 & DG \end{bmatrix} \begin{Bmatrix} \cos \gamma \\ \sin \gamma \\ 1 \end{Bmatrix} \quad (3.1)$$

This relation is transferred from its local coordinate into the global coordinate system and we have,

$$\begin{Bmatrix} x_{end/0} \\ y_{end/0} \\ z_{end/0} \end{Bmatrix} = \begin{bmatrix} O_1D & 0 & 0 \\ 0 & O_1D & 0 \\ 0 & 0 & DG \end{bmatrix} \begin{Bmatrix} \cos \gamma \\ \sin \gamma \\ 1 \end{Bmatrix} + \begin{Bmatrix} -d \sin \gamma \\ d \cos \gamma \\ 0 \end{Bmatrix} \quad (3.2)$$

Using Eq. (3.2), the trajectory envelope of its end effector was drawn as Fig. 3.2 (d). This graph helps to calculate the length of each step and the height that the structure can cross.

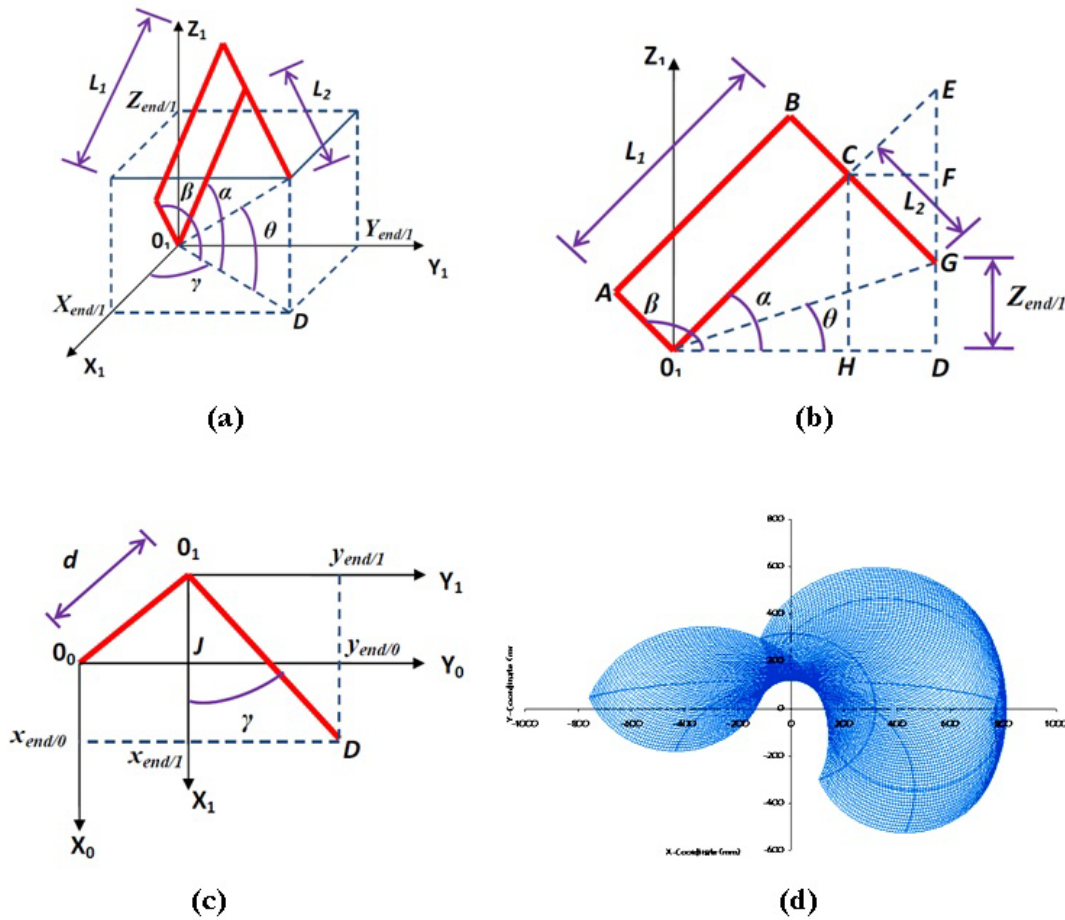


Figure 3.2 Kinematic analysis of four-bar linkage
 (a. four-bar linkage in 3D space; b. four-bar linkage in its local coordinate plane;
 c. the relation between local and global coordinate system, top view; d. trajectory
 envelope of end effector)

Based on four-bar linkage, Theo Jansen mechanism has 8 linkages per leg and 120° of crank rotation per stride. This mechanism has bar linkages arranged such that a rotation movement is converted to walking pattern of a four legged animal. Step height is

primarily achieved by a parallel linkage in the leg that is folded during the cycle angling the lower portion of the leg. The best combination of leg length can be figured out through analytic methods and verified by numerical simulations. A flash animation of Theo Jansen mechanism is available online, in which you can move sliders to change the lengths of corresponding bars [16]. 3D modeling of these linkages were built in SolidWorks and virtually assembled for testing.

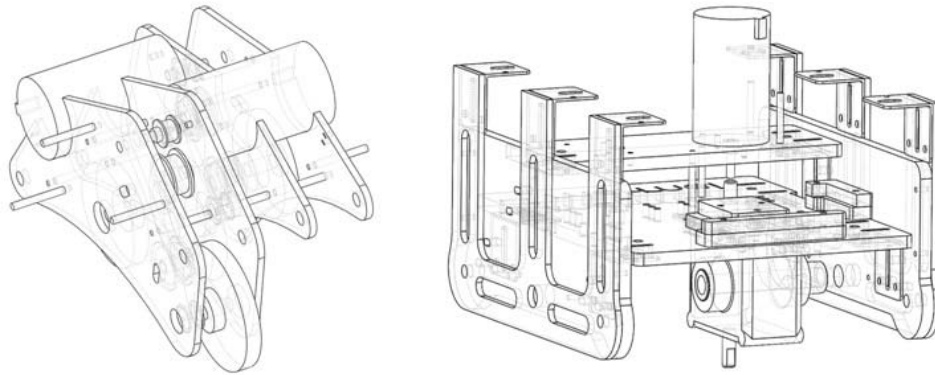


Figure 3.3 Robot driven system (belt driven, left; gear box, right)



Figure 3.4 Mei-Mei robot (left) and its legs (right)

The first drive mechanism tried was the belt-driven mechanism. The trial run was quite promising since the overall installation was small in size and very quiet when running. However, it requires a mechanical check periodically to make sure the belts are engaged well with the gear wheels. Even so, its belts slipped very often partly because the robot is

heavy, partly because of the absence of a belt tensioner system. So, I chose to use the A-2B-8-H0500G gearbox with 50:1 gear ratio from SDP/SP to drive the robot (see Fig. 3.3). Figure 3.4 (a) shows the appearance of the Mei-Mei robot and Figure 3.4 (b) is a close look of its bar linkage system. Detailed engineering drawings are archived at the project website at <http://web.media.mit.edu/~saga/projects/birf.htm>.

3.3 Electrical System

Its six legs were divided into two groups mechanically and driven by two separate motors connected to their cranks. Thus, I chose the RoboteQ's AX 1500 dual channel motor controller in this application. The controller is designed to convert commands received from a radio control (R/C) receiver, analog joystick, wireless modem, or RS232 serial port into high current output for driving one or two Direct Current (DC) motors. Its two channels can either be operated independently or mixed to set the direction and rotation of a robot by coordinating the motion on each side.

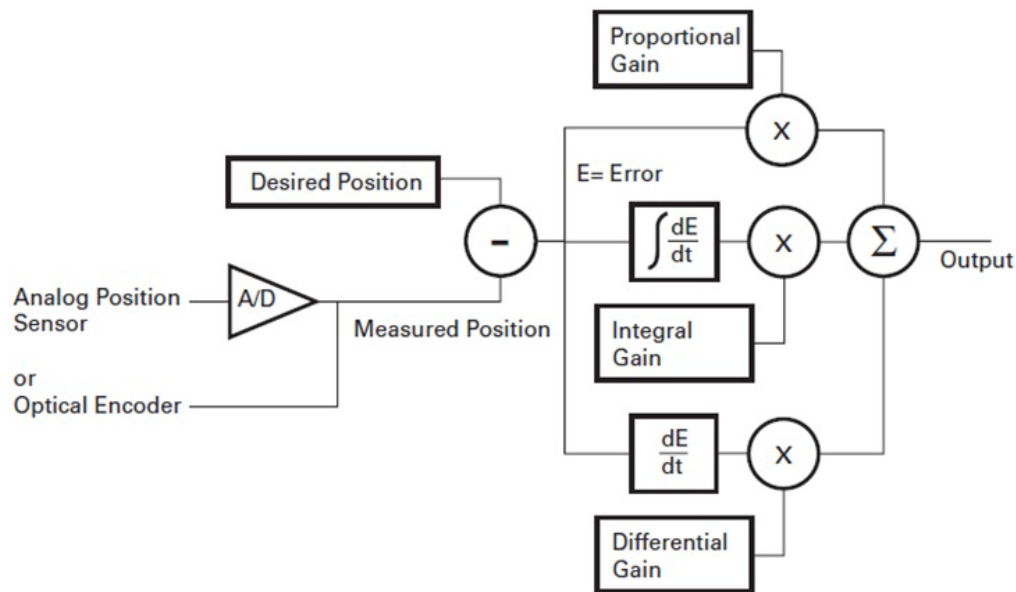


Figure 3.5 PID algorithm used in position control

In the Mei-Mei robot, I used the R/C mode with open-loop control. In this mode, the speed or position information is contained in pulses whose width varies proportionally

with the joystick's positions. There is no feedback control loop in the robot controller. The electrical power wiring and R/C cable wiring diagrams of the AX 1500 controller can be found in its user's manual [17].

For better control and improved safety, the controller can be configured with quadrature optical encoders to continuously monitor the errors and to perform correction with closed loop speed or position control. Figure 3.5 shows a representation of the Proportional, Integral and Differential (PID) algorithm. Every few milliseconds, the controller measures the actual motor speed and subtracts it from the desired position to compute the speed error. The resulting error value is then multiplied by a user selectable proportional gain. The resulting value becomes one of the components used to command the motor. The effect of this part of the algorithm is to apply power to the motor that is proportional with the difference between the current and desired speed: when far apart, high power is applied, with the power being gradually reduced as the motor moves to the desired speed. The differential control component of the algorithm computes the changes to the error from one period to the next. The differential component will also greatly help dampen any overshoot and oscillation. The integral control component of the algorithm performs a sum of the error over time. This component helps the controller reach and maintain the exact desired speed when the error is reaching zero (i.e. measured speed is near to, or at the desired value). These gain values can be selected with Matlab Simulink simulations.

3.4 Lessons Learned

There are four lessons that I learned from my experience:

1. Weight: the total weight of the robot needs to be defined carefully in the design specification if it is going to the stage. When designing the Mei-Mei robot, I did the analysis to make sure that the motors and gear boxes selected can provide enough torque to drive the robot. These analyses also ensured the robot structure has enough

stiffness so that it won't deform a lot or crash when moving. Later, the trial run endorsed these analysis results. However, it turned out the robot is too heavy and requires two or four people to lift it onto the stage. This is not convenient at all.

2. Dimension: similar to the weight factor, the volume size of the robot is another big concern. Stage robots often need to be shipped from one location to another in a container. The ease of packing and volume optimization are very critical. When designing such a robot, it is better to take this into consideration at the beginning. Modular and foldable designs are preferred.
3. Maintenance: when giving touring performances in different parts of the world, we definitely want to make everything as reliable as possible. No director wants to ship tons of spare parts or an entire machine shop overseas. Unfortunately, the Mei-Mei robot has more than 1000 components and requires almost equivalent maintenance time after each performance. These include checking the bearings, adding grease, recharging the battery, and tightening the screws on the robot.
4. Machining: the components of the Mei-Mei robot have a lot of curves and round corners which make mounting and holding them on a drill or a mill cumbersome. Aesthetic factors should also cooperate with engineering and fabrication concerns.

Here I share the important lessons that I learned from more than six-month design and fabrication work on the Mei-Mei robot. After that, I began to reflect on my experience: what is the difference between stage robots and other kinds of robots? How do these differences affect the design of the robot? What kind of methods can we introduce to help the design? I remembered that I was facing the same problems when designing something in my production development class. This inspired me to try product design methods in this thesis project. Later, they were proven feasible and effective in making the second robot. I will discuss this with details in Chapter 4.

3.5 Summary

The Mei-Mei robot was the first furniture robot that I designed for the opera. Its design was inspired by Theo Jansen mechanism and the robot itself is driven by two DC motors with differential steering control. In this chapter, I presented the analytic model of four-bar linkage—the basic element of its leg and discussed the PID control algorithm that can be implemented on the robot for better performance.

The robot itself was successful in that it has the appearance of an organic entity and has elegant movement. However, it also has some disadvantages that prevent it from becoming a preferred model for stage-performance robots. I reflected the design process and decided to adopt product design methods for my next robot.

CHAPTER 4

A TRANSFORMABLE ROBOT – SOFA

4.1 Introduction

In October 2009, Alex McDowell, Bob Hsiung (development manager), and I had another meeting about the set pieces. Alex reviewed the Mei-Mei robot and presented his idea about some other furniture robots onstage. There are two important comments on the Mei-Mei robot: (1) it does not seem to originate from the same robot family as other robots on stage. In the story, all robots were created by Nicholas, Simon's adopted son. While the OperaBots, nine assistant robots in the opera, have an early-prototype-like look and use a lot of plastics components, the Mei-Mei robot was totally made of aluminum. (2) Since the Mei-Mei robot has legs and motors, a clue on its functionality is given to the audience at a glance. It will be hard to impress them with its movement later on.

We also discussed what we want from the robots. These robots should have the appearance of organic entities, look like something from the near future, move in a funny way (e.g., lurching, gliding, etc.), and can be used as furniture on the stage. But we had no idea what they would be at that time.

4.2 Mechanical System

Since nature has discovered many clever solutions to challenging problems, the biological world has proven to be an endless source of inspiration and guidance for the development of future robots. In this project, I chose the approach of making biologically-inspired robots for stage performance.

The work strictly followed the standard product design process discussed in section 2.3. Firstly, we defined and identified the customer needs, in this case, the robot design requirements in terms of its visual appearance, the functionality, the movement. It is

important and necessary to get the opera creative team involved into the discussion and decision making process. When this information is clarified, I started brainstorming sessions and came out with several design concepts as shown in Fig. 4.1. Design candidates No. 1, 5, and 6 were inspired by worms; No. 2 may jump like a grasshopper. No. 4 may change its form and move like bacteria. No. 3 and 8 will mimic the behaviors of a lizard and a snake, respectively. The tumbleweed offered the inspiration for No. 7.

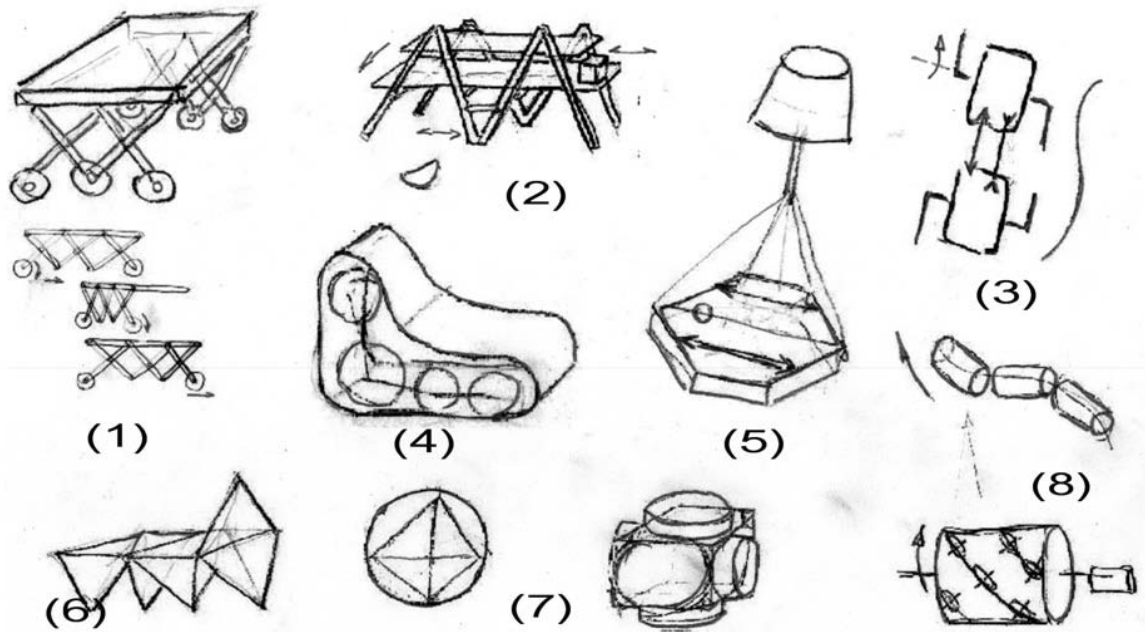


Figure 4.1 Design candidates of biologically-inspired robots

However, it may still be hard to describe the appearance and behavior of the robots using a sketch drawing only. So I sent a detailed drawing of the design candidate No. 6 (see Fig. 4.2) to an animator so that he can visualize this design. His flash animation can be found on project website at <http://web.media.mit.edu/~saga/projects/birf.htm>. Visualization helped me a lot in communicating with other people in the production team and refining the design concept.

The Sofa concept was selected among these candidates. In order to determine the size and functionality of the robot, we build a graphic model (see Figure 4.3), and two full-

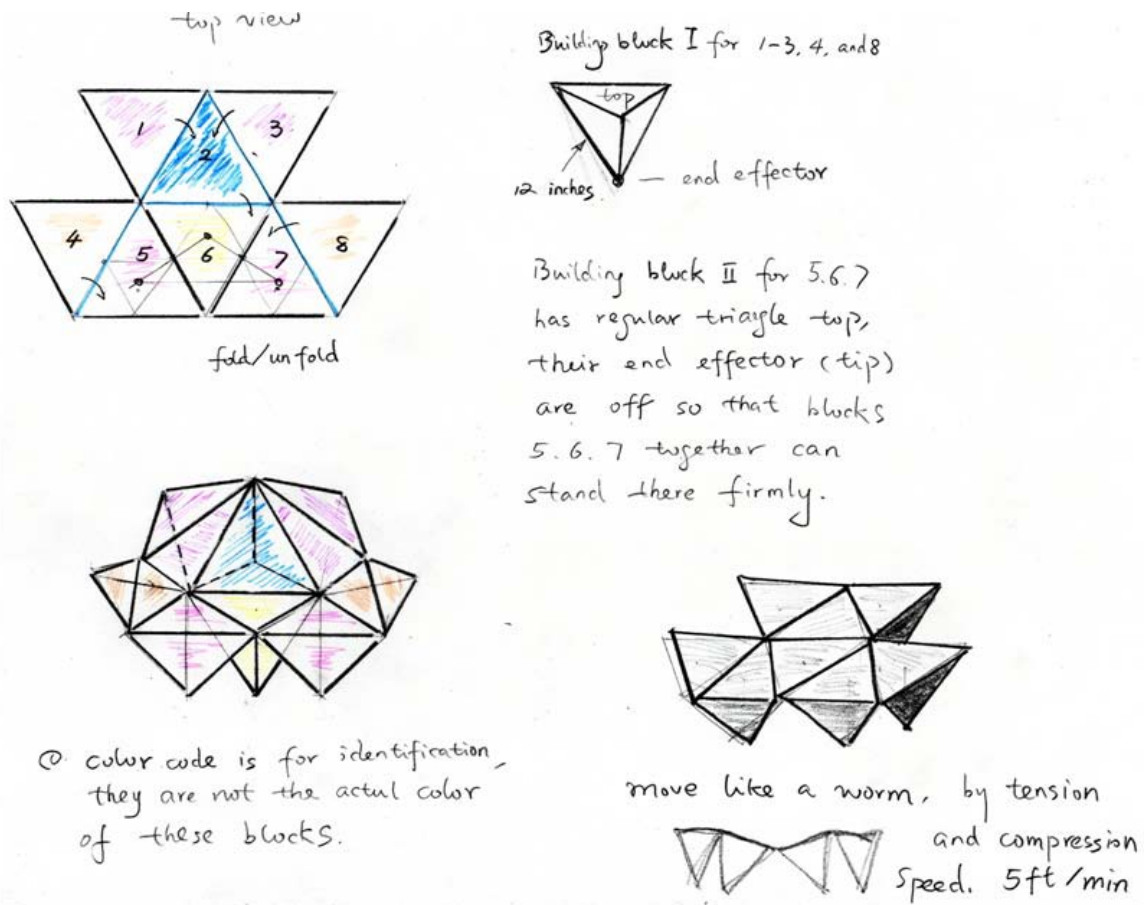


Figure 4.2 Details of design candidate No. 6 (Sofa)

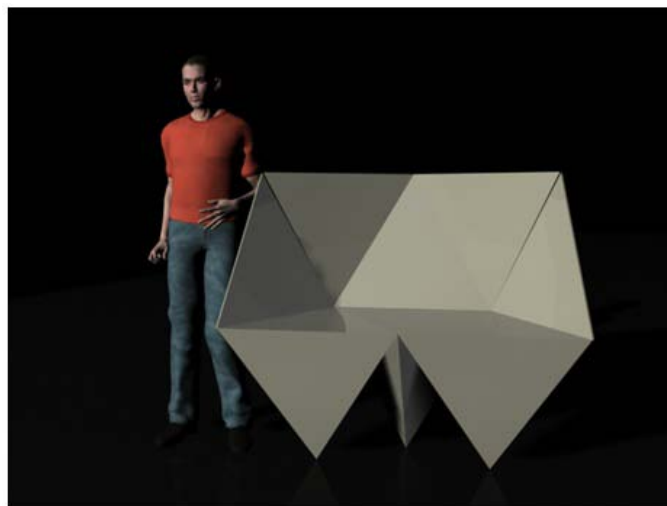


Figure 4.3 Computer graphic model of the Sofa (by Peter Torpey)

scale cardboard models, and a 1:12 scale model based on the design concept. After building the full-size cardboard models, I decided that the top plane of the Sofa would be around 24 inches above the ground level. The scale model was used for choreographic designs and shooting a stop-motion movie of the robot. The video can be found on project website as well.

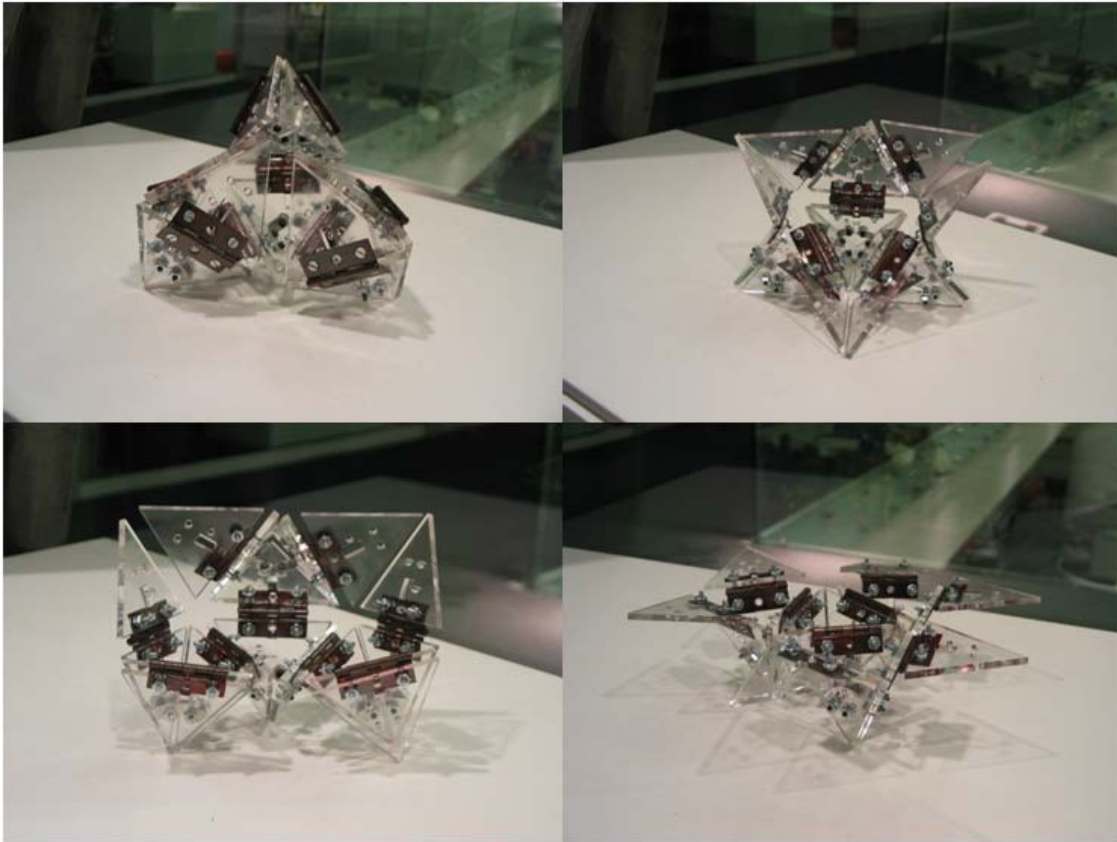


Figure 4.4 Scale model of the Sofa robot

After the concept was approved by the creative team, I started with mechanical design. Through the lessons learned from the Mei-Mei robot, I want to make the design as simple as possible. Instead of using a DC motor to direct drive a rotational shaft for the tension and extension of a joint, here I chose a linear actuator to open and close the joint between two modules. The design has fewer parts for fabrication and installation, therefore, gives the robot a neat appearance, and also makes the maintenance easier. On the other hand, the mechanical design will be tricky and the control will be a more complicated.

In order to prove that the structure can move in the designed way, I built and tested a simplified model in MSC Adams. The direction of its movement can be controlled with the phase difference between the control signals given to three linear actuators. The details about the control algorithm will be discussed in the electrical system section.

There are many variables in the mechanical structure, such as the position of the linear actuator mounting plate, the opening angles between two modules, and the stroke length of the linear actuators. One change in a factor often affects many others. So, I drew a sketch model in SolidWorks and defined the geometric relationships between some elements with formulae embedded inside (see Fig, 4.5). This allowed me to experiment with different configurations and to optimize the structure before started designing individual components.

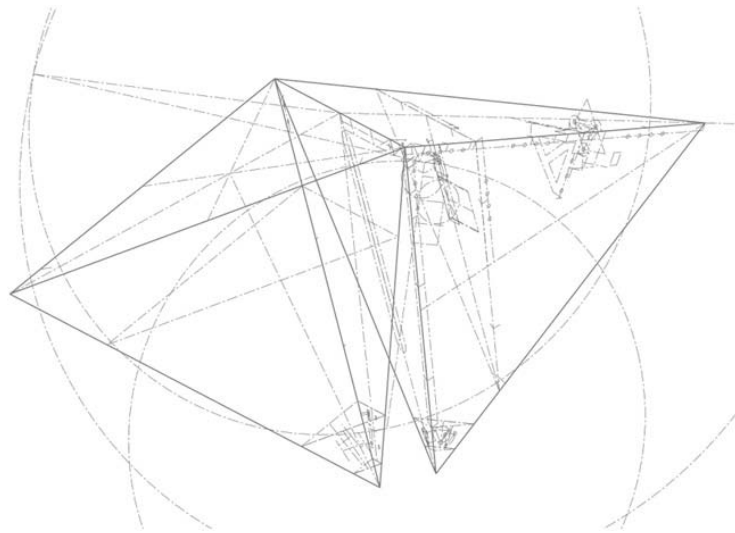


Figure 4.5 Geometry sketch drawing of the Sofa robot

Another engineering problem is about the stiffness of the structure. It is difficult to achieve a rigid structure about a half-sofa size with $\frac{1}{4}$ inch thick Polypropylene plates. Although it is possible to build a stiff structure with aluminum, it is not feasible because of the theatrical considerations that I mentioned previously: first, this solution makes the robot too heavy, and may result in high noise level when moves; second, there is a requirement from the opera creative team that the robot should be translucent and has

the similarity with the OperaBots in materials. So, I compared the material properties and mechanical characteristic of Polyethylene, Polycarbonate, and Acrylic and decided to use Polyethylene for the construction of the robot.

The structure stiffness was achieved using following methods: first, I use the pyramid structure for all modules of the robot. The structure is capable of supporting a large load without twisting itself or having significant deformation; second, every plate is connected to its neighbors with joint pieces so that they construct a closed form together and any load applied can be passed along the structure; third, a middle plate was added inside of each module for extra support and for mounting equipments. I also analyzed the structure with FEM software. Figure 4.6 shows that the top plate deformation of the side modules under an extremely large load.

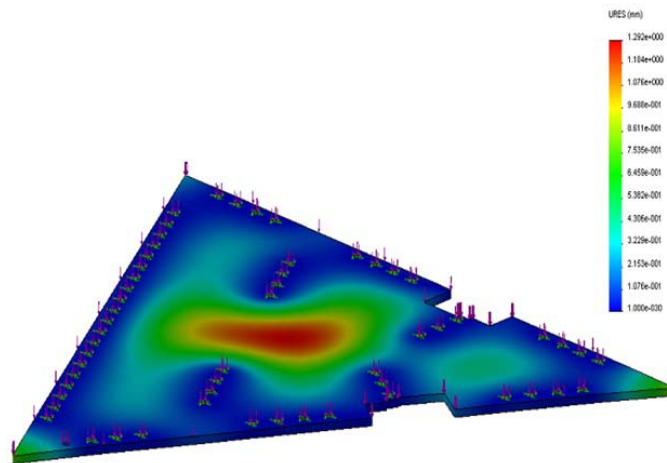


Figure 4.6 ANSYS analysis of top plate (under 500 lbf, maximum deformation 1.29 mm)

The fabrication was done at the machine shops in the MIT Media Lab and Edgerton Center. The facilities that were used in the process include water-jet, laser cutter, Computer Numerical Control (CNC) machines, etc. SolidWorks models and engineering drawings are archived on the project website. Figure 4.6 shows the rendering model done by Computer-aided Design (CAD) tools and the finishing look of the Sofa robot.

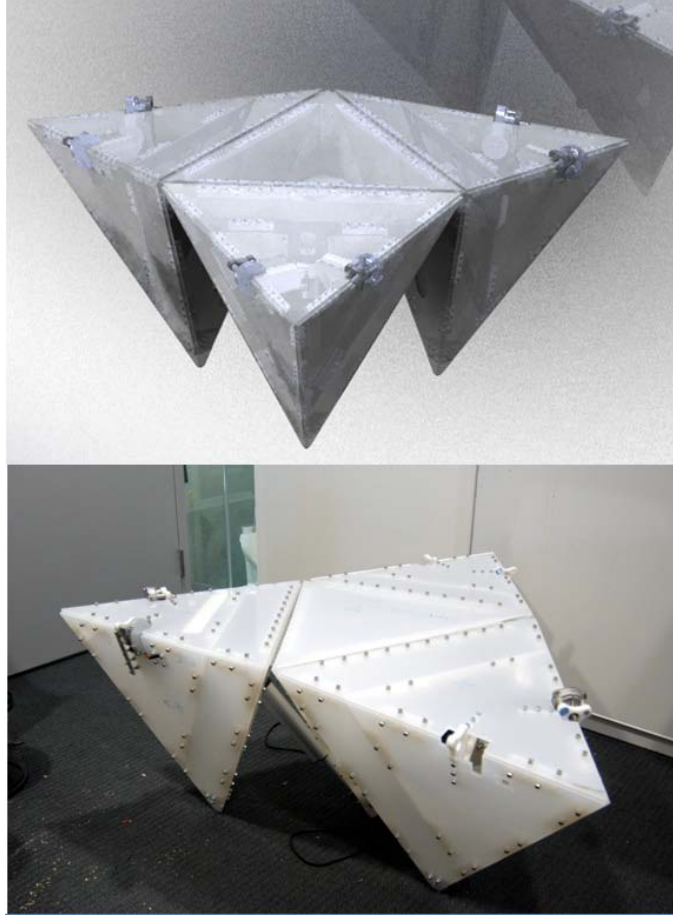


Figure 4.7 Rendering model and full-scale prototype of the Sofa robot

4.3 Electrical System

The electrical system has three tasks: driving the actuator, sensing the orientation of the modules, and controlling the lighting. The first two will be discussed in this section and the design of the lighting system will be presented in section 5.2.

The Sofa robot was designed with translational and rotational motion. It has a similar structure to the star robot that is presented in [18], thus the same sinusoidal input may be used, probably with several experimental adjustments. Its modules form a star of three points with an angular distance of 120° , which enables it to move on a 2D surface, in three directions, as well as performing rotations in the yaw axis.. The locomotion is

achieved by means of sinusoidal waves. If two adjacent modules are in phase and the opposite has $\Delta\phi \in [100,150]$, it moves on a straight line in the direction of the module out of phase. However, this movement is very surface-dependant. When the increment of phase between the three modules is 120° , for example, $\phi_1 = 0^\circ$, $\phi_2 = 120^\circ$ and $\phi_3 = 240^\circ$, the robot performs a slow rotation in the yaw axis. The sinusoidal input to move a modular robot with a star configuration is:

$$V_i = A \sin \left[\frac{2\pi}{T} t + (i-1)\Delta\phi \right] \quad (4.1)$$

where A is the amplitude of the wave. i is the actuator number (from 1 to 3 in the direction of travel). T is a factor selected with several experimental adjustments. $\Delta\phi$ equals to 120° as the phase difference between actuators.

The resultant waveform is shown in figure 4.8:

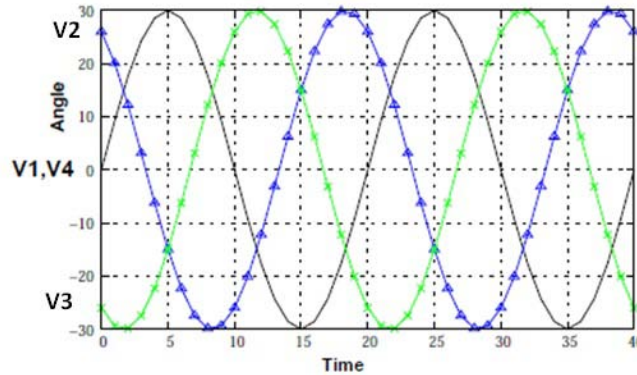


Figure 4.8 Driving waves for rotational motion

With reference to the equation above, the following firmware code was written to control the three linear actuators on the Sofa.

```
void rotateFun()
{
    float com_factor, throttle_1, throttle_2, throttle_3;

    for (int i=0; i<=PERIOD; i++)
    {
```



```

com_factor = 2*PI*i/PERIOD;

throttle_1 = mapFloat(sin(com_factor+PHASE_1), SINU_AMP_LOW,
                      SINU_AMP_HIGH, SERVO_LOW, SERVO_HIGH);
throttle_2 = mapFloat(sin(com_factor+PHASE_2), SINU_AMP_LOW,
                      SINU_AMP_HIGH, SERVO_LOW, SERVO_HIGH);
throttle_3 = mapFloat(sin(com_factor+PHASE_3), SINU_AMP_LOW,
                      SINU_AMP_HIGH, SERVO_LOW, SERVO_HIGH);

if (throttle_1>0) {throttle_1 = throttle_1*COMPZ_FACTOR;}
if (throttle_2>0) {throttle_2 = throttle_2*COMPZ_FACTOR;}
if (throttle_3>0) {throttle_3 = throttle_3*COMPZ_FACTOR;}

m_controller_1.write(throttle_1);
m_controller_2.write(throttle_2);
m_controller_3.write(throttle_3);

delay(DELAY);
}

```

The firmware of the Sofa controller can be found in Appendix A.

The control signal is sent to three SyRen 25 motor drivers from Dimension Engineering. These drivers are set in their R/C mode, which enables the driver to interface with the microcontroller using standard R/C pluses. The speed and direction of the motors can be set using a pulse. For example, a 1500 us pulse is full reverse and a 2000 us pulse is full forward. The wiring diagram and more details can be found in the user's manual of the driver [19].

The other task of the electrical system is to measure the orientation of the robot module in real time and to use the information to adjust the robot accordingly. Here a MEMS-based capacitive accelerometer from STMicroelectronics (LIS3LV02DQ) is used for measuring the tilt angles. The sensor was chosen because of its small package size, low weight, and high accuracy. This sensor measures 7 mm × 7 mm × 1.8 mm, weighs about

0.2 gram, and has an effective sensing range of $\pm 2g/\pm 6g$. It includes a sensing element capable of measuring linear acceleration signals over a bandwidth of 640 Hz and an IC interface able to send out the data in 12/16 bit data representation through an Inter-Integrated Circuit/Serial Peripheral Interface (I2C/SPI) serial interface.

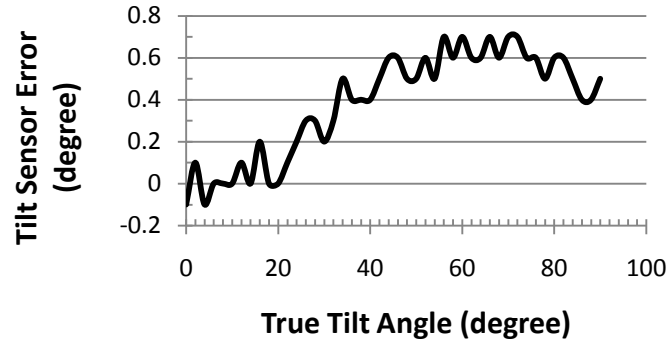


Figure 4.9 Measurement errors of the accelerometer (average: 0.38°)

The accelerometer in its steady state can be directly used to measure the gravity vector g which is always vertical to the horizontal plane. Here we define that the sensor reaches its steady-state conditions in the state of rest or uniform motion characterized with $1g$ acceleration caused by gravity. Tilt angles are then calculated from three orthogonal acceleration components as:

$$a = \sqrt{a_x^2 + a_y^2 + a_z^2} \approx g; \quad (4.2)$$

$$\theta = \sin^{-1}\left(\frac{a_x}{g}\right); \quad \phi = \sin^{-1}\left(\frac{a_y}{g \cdot \cos \theta}\right) \quad (4.3)$$

where is $[a_x \ a_y \ a_z]^T$ is the gravity vector measured in the local frame of the sensor. θ and ϕ are pitch and roll angles in the global frame.

An experiment on the LIS3LV02DQ accelerometer with 12/16 bit data representation (11-bit ADC) shows that it has the average error about 0.38° (see Fig. 4.9). The sensor is accurate enough for measuring title angles of a robot module when it is stationary or moves slowly. The sensory data can be used to perform a close-loop feedback control for initializing and positioning robot modules. Detailed information on sensor calibration

and error cancelling can be found in [20]. The firmware program for reading sensor outputs through an I2C/SPI serial interface can be found in Appendix B.

In addition, the wireless communication between the robot controller and a host computer is achieved through a Zigbee network. The components for constructing the network include a pair of Xbee 2.4GHz chip antenna from Digi, an Arduino Funnel I/O (Fio) board, and an Xbee Explorer USB board.

The computer sends control signals and receives sensory data through a virtual serial port, which is physically connected to an Xbee Explorer USB board. The Xbee antenna module on the Explorer board takes the 802.15.4 stack (the basis for Zigbee) and wraps it into a simple to use serial command set. Then the data is transmitted through a point-to-point network to another antenna module mounted on an Arduino Fio board, and finally, the Fio board interfaces to sensors and motor drivers according to the command that it receives.

Configuring Xbee module into different modes, such as point-to-point and multi-point networks, is supported by the X-CTU software from Digi. The tutorial can be found in the user manual of the software [21]. The Fio board is wirelessly reprogrammable. The tutorial on wireless bootloading can be found online [22].

4.4 Lessons Learned

The Sofa is a modular robot that can transform itself into a sofa onstage and walk with a rolling, lurching, and gliding moving. It also has the features that can be endowed with interactive behavior structured around scenes, beats, and actions. Thus, the design of this robot was successful.

However, there are still a few things that can be improved:

1. Mobility: since the robot has an irregular shape and smooth surfaces, it is not easy to move it on the stage or lift it up on a pickup truck. If handles were put on the robot, it will make this work much easier.
2. Maintenance: when users want to recharge the battery in the Sofa, they need to open the top plate in the central module. This operation takes about 20 minutes. It will be better if the battery module is removable from the robot and can be replaced within a few minutes. In addition, a transparent quick-release inspection window may also be added into the design. This will make the maintenance work faster and easier than the current design.

The other concern was about planning. Since the requirements and the focus of interest may vary along the robot development, it is important to communicate well with people in the creative team and to review the priority list of the robot elements periodically.

4.5 Summary

There are many challenges in designing robots for the stage. The design of these robots should not only incorporate technological, conceptual, and aesthetic innovations, but also coordinate with narrative and musical materials in the performance.

Theo Jansen said, “The walls between art and engineering exist only in our minds.” The work shown in this chapter gives an example of achieving artistic goals via a series of engineering approaches. This chapter also discussed some lessons that I learned from the design and implementation of the Sofa robot.

CHAPTER 5

IMPLEMENTATION OF STAGE ELEMENTS

5.1 Introduction

While the robotics community strives to define functional models and theories grounded in the physical reality of the robotic agent, art, and in particular theatre, are more concerned about staging the unreal. Much research has been done on the theoretical level: theatre theorist Horakova entitled a paper: “Robots between Fictions and Facts” [23] and the seminal book from Reichardt is entitled: “Robots: Fact, Fiction and Prediction” [24]. Demers related the inter-related constituents of a robot actor to human perception in the following areas: the historical lineage of the uncanny valley, artificial intelligence (AI), anthropomorphism, causality and animacy [25].

This chapter mainly focuses on some engineering aspects of stage robots on a practical level. Our experimental work and some related work on robot lighting, visual and sound effects will be presented in the following sections. However, the implementation of stage elements is a quite broad topic and this chapter only covers some specific problems and their solutions that were experienced during the development of our stage robots.

5.2 Lighting

Modern stage lighting is a flexible tool in the production of theatre, dance, opera, and other performance arts. The functions of lighting include illumination, revelation of form, focus, setting the tone of a scene, establishing or altering position in time and space, projecting scenery, triggering the action onstage, and composition. The four main qualities or properties of lighting are intensity, color, pattern and focus [26, 27].

This work designed and implemented a local lighting system to illuminate the Sofa robot from inside (see Fig. 5.1). The system has individual lighting control over each robot

module and the features include wireless dimming, fade-in/-out, and strobe/flashing.

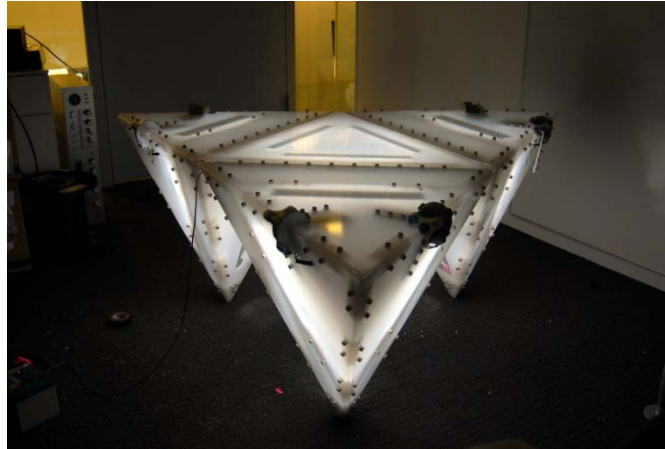


Figure 5.1 Sofa robot with its internal lighting

The circuit diagram of the lighting board is attached in Appendix C. The lighting control board includes an ATmega168 microprocessor, a 3021 BuckPuck LED driver from LuxDrive, and supporting circuits. The control input pin of the LED driver is fed with Pulse-width Modulation (PWM) signal from the microprocessor. The LED driver is set as its external control mode, also known as its adjustable current configuration. In this mode, the driver delivers an adjustable output voltage according to the input control voltage. The wiring diagram of the LED driver can be found in its data sheet [28].

PWM is used to regulate the input voltage of the LED driver in this application. It uses a rectangular pulse wave whose pulse width is modulated resulting in the variation of the average value of the waveform. By switching voltage to the load with the appropriate duty cycle, the output will approximate a voltage at the desired level.

Each lighting circuit has 6 PWM outputs and has a bidirectional 2-wire I2C bus which allows us to chain 255 boards together. Thus, the circuit can control up to 1530 independent lighting channels theoretically.

5.3 Visual Effects

In 1994, Milgram and Kishino defined a Mixed Reality (MR) as “... anywhere between the extrema of the virtuality continuum.” [29] It is possible to introduce MR technology into theaters to produce new environments and visualizations where physical and digital objects co-exist and interact in real time.

This work did some preliminary research on implementing a MR system with Infrared (IR) tracking and high resolution projection. This investigation is based on the *Physical Computing Robot Tracking Installation* project by Chris Rojas (see Fig. 5.2). I did some experiments accordingly, but didn't get a chance to integrate the system into the Sofa installation due to the limited time that I have.



Figure 5.2 Visual Effects of the Physical Computing Robot Tracking Installation (adopted from [30])

Rojas's project used a PlayStation 3 (PS3) Eye camera, an Optoma EX525ST DLP short throw projector the ceiling, Community Core Vision (CCV) and Processing running MSAFluid [30].

Its positioning system had an IR LED pointing upward towards a modified PS3 camera which only sees infrared signals. The hardware modification was done by removing the IR blocking filter and adding a visible light blocking filter in the camera. The vision data was collected by a driver developed under CL-Eye Platform Software Developers Kit (SDK), which can be downloaded from <http://codelaboratories.com/downloads>. The computer vision program was developed under CCV, which is an open source/cross-

platform solution for computer vision and machine sensing. It takes a video input stream and outputs tracking data (e.g. coordinates and blob size). More information about CCV can be found at <http://ccv.nuigroup.com>. Last, a rendering engine was developed under MSAFuild, a library for solving real-time fluid dynamics simulations based on Navier-Stokes equations and Stam's fluid dynamics solver [31]. A ceiling-mounted projector gets the rendering stream and projects it around the robot.

The same solution can be used for the Sofa robot. Considering the disturbance from other lighting sources on the stage, a possible improvement on this project is to add a tagged source on a robot to indicate its location. One of the most robust ways of sensing a particular object is to interrogate the environment with a source at a specific frequency. Since the camera used here has a sampling rate of 100 frame per second, it is capable of capturing the image of a LED blinking at 50 Hz or at lower frequency. This allows us to look for a response at that single frequency and ignore the rest of the noise in the environment.

5.4 Sound Effects

Throughout the development of these furniture robots, I tried to design some acoustic instruments that can be attached and used on these robots. I made a tunable Kalimba (see Fig. 5.3) as a part of the experience. This instrument consists of a wooden sound box with 5 keys (strips made by spring steel) attached to the soundboard. It also has a wheel that can be tuned to adjust the length of the key. The vibration in the keys is sensed by a guitar pickup mounted on the soundboard and then the signal runs to an amplifier, which drives a speaker.

The sound of this instrument has a similar quality of a bass guitar and it produces funny and interesting sound effects by tuning a key when playing a note. A thought was to attach the wheel with a turning part on the robot and associate the sound effect with the motion of the robot, but it turned out to be a difficult task since it is hard to find a

mounting point on the robot without changing its appearance and to mimic the variable and dynamic sound quality produced from the instrument by a human player. In the end, we decided to let the Sofa robot keep its silent motion and for the OperaBots, wireless speakers are attached on them. It might be a good idea to design an instrument ahead, start over from that, and then incorporate its features and parts on the robot.



Figure 5.3 Prototype of a tunable Kalimba

5.5 Summary

This chapter discussed some engineering aspects (e.g. lighting, visual and sound effects) of the design and implementation of stage elements for stage robots. New advances in technology such as vision-based motion capture, low-cost projectors, film-like carbon nanotube speakers, and high-brightness LED lightings, are making opera robots come true on stages. Many products based on these technologies are commercially available in the market. All these present many challenges and opportunities for designers to create an amazing visual and audio experience for their audience.

CHAPTER 6

CONCLUSION AND FUTURE WORK

This thesis aimed to further the state of the art in stage robot design. As part of this work, we considered robot design as a discipline in its own right, taking inspiration from product design, mechanical engineering, human interface, choreographic design, and sensitivity to music. The result of this work was two performance-ready robots. I collected feedback from the designers, artists, and engineers of *Death and the Powers* to further refine these robots. My work was judged according to four criteria proposed by Hoffman: the visual appearance, the overall functionality, the quality of movement, and the fluency of HRI [11].

Here I created a family of furniture robots that look and act like organic entities for the production of *Death and the Powers*. Mei-Mei is a six-legged walking robot that is being developed in the lab as a moving workbench. It can move forward, backward, and even turn around with differential steering control. Sofa is a modular robot that can transform itself into a sofa onstage and walk with a rolling, lurching, and gliding motion. These two robots were also designed in the way that they will be endowed with interactive behavior structured around scenes, beats, and actions. The design of these robots not only incorporates technological, conceptual, and aesthetic innovations, but also coordinates with narrative and musical materials in the opera.

These robots were demonstrated during two Media Lab sponsor weeks in October 2009 and May 2010. The Sofa robot was also brought into the opera rehearsal in June and July 2010. They both got a lot of public attention because of their novel design, imposing appearance, and elegant movement. Karole Armitage, the choreographer of the opera, is also considering bringing the Sofa into the dance performance that she is working on.

The design of these robots was successful. Possible future work includes integrating autonomous interactive features into these robots. In the long term, we will design and

build robots that will not only function flawlessly on stage, but also interact convincingly with human actors. They must hit their cues on time and follow the dynamics of live performance.

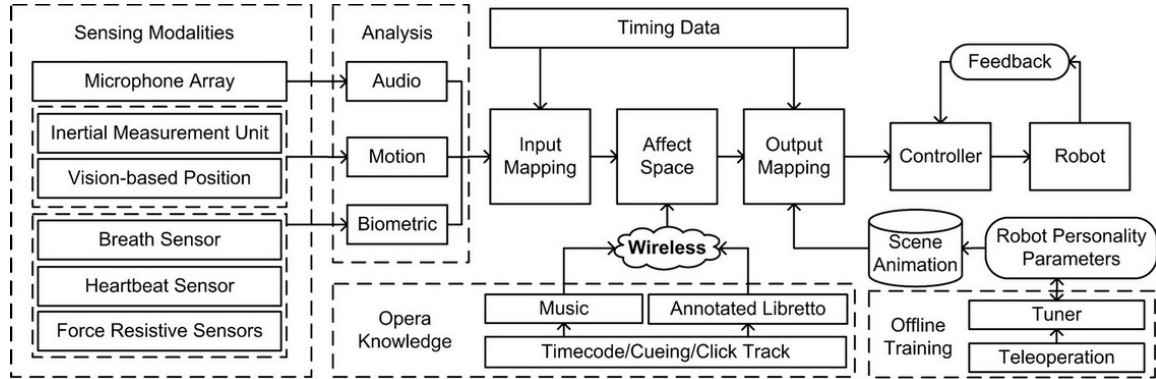


Figure 6.1 Control architecture of a theatrical robot

The future control system (see Fig. 6.1) is proposed based on the previous work done by Hoffman [7, 32] and Torpey [33]. First, our system will use several sensing modalities to create a real-time model of the live performance. The sensory data will be analyzed, and the output from three analysis modules in Fig. 6.1 will be used as an input representation for our software model. Here we take audio analysis as an example: employing the methods developed by Pentland [34], key factors of social dynamics such as activity level and stress will be derived from the audio’s mean energy, the frequency of its fundamental, and its spectral entropy using Fast Fourier Transform (FFT), envelope detection, and other methods as appropriate. Next, we will use mappings to translate the input representations and Opera Knowledge into a semantic model of the scene’s affective state. This will be implemented in Max/MSP, a graphical programming environment. To describe the affective state and its traveling trajectory, we will adapt either Russell’s 2D circumplex model or 3D affect space that Breazeal used for Kismet [35, 36]. Subsequent mapping from the space together with a Scene Animation database and robot character parameter set will lead to the output representations that drive physical motors. Robot personality data will be tunable via an offline training process. Finally, there will be a feedback loop between the robot and its controller.

The other part will be covered in future work is to test robot HRI functions in theatrical context. Designing for interaction is always a challenge, especially when working with music and sound. In *Death and the Powers*, Nicholas is the character who interacts most with the robots. We might want the robots to respond to sounds, for example, Nicholas' singing. And we may also want them to make vocal-like sounds, for example, imitating or processing Nicholas' voice. For this reason, we will create two experimental scenes and design the robot animation and sound effect accordingly:

Scenario I: Nicholas suddenly becomes angry and changes the direction of his voice when yelling to the robots.

Behavior: Robots are shocked and run in the opposite direction, shaking and screaming.

Scenario II: Nicholas talks to robots when they are at their early prototype stage.

Behavior: Robots respond with vocal-like sounds and move around awkwardly, like a child learning to speak.

Taking a cue from Isla's assertion that the sense of an inner life arises mostly from low-level motion (e.g., attention and focus) [37], our robots' behavior in the scene animation database will focus on these low-level parameters and behaviors.

When it comes to future applications beyond theater, I propose a music therapy system that can provide a customizable assistance protocol for motivation, encouragement, and companionship of Alzheimer's patients. The goal of this work is to validate the assertion that a sociable robot can establish a productive interaction with elderly individuals using cognitive exercises designed around musical activities. The study will focus on the cognitive, interactive, and adaptable aspects of robot behaviors in the context of human-robot musical collaboration. I aim to address the following questions:

1. Can Alzheimer's patients maintain their musical attention and memory with the help of a robot in an intervention specifically designed to promote active listening?

2. Does playing music-based games with a robot help patients in restoring their social communication skills (e.g., smiling, speaking, and participating in group activities)?
3. How do differences in robot emotion patterns affect the progress of learning and adaptation exercises on human subjects with different personalities?

The proposed therapy system will consist of a set of cognitive games and musical tasks that require effective human-robot collaboration. A robot needs to recognize human behaviors using multimodal inputs (e.g., visual, auditory, tactile, and other sensory cues), generate emotion from its internal cognitive state and affect space, and express emotion through proxemics, gesture, and musical feedback. Musical factors (e.g., tempo, mode, pitch, melody, harmony, and rhythm) will be used in the design of adaptive games and the expression of robot emotion. These factors will be controlled based on the accuracy and variance of human input/performance. In addition, I will integrate time-varying affect-related components such as moods, affect-based attitudes, and personality traits into the computational model of robot emotion so that these phenomena can be beneficial to user engagement in human-robot collaboration.

It is my hope that biologically-inspired robots will be used in every area related to our daily life, from theatre arts, to movie industry, to robotic house, and to medical care. Due to the rapid progress on the technologies of robotics, I believe this will be feasible in the near future.

REFERENCES

- [1] Kyldex, <http://www.medienkunstnetz.de/works/kyldex>, Oct. 2009.
- [2] Trimpin, <http://en.wikipedia.org/wiki/Trimpin>, Oct. 2009.
- [3] G. Weinberg and S. Driscoll, “Robot-hum Interaction with an Anthropomorphic Percussionist,” in *Proceedings of CHI conference*, Montreal, Canada, Apr. 2006.
- [4] *Robots break a leg on stage*, <http://www.plasticpals.com/?p=12202>, Oct. 2009.
- [5] Les Freres Corbusier, “Heddatron,” <http://www.lesfreres.org/heddatron/>, Oct. 2009.
- [6] AUR Robotic Desk Lamp, <http://robotic.media.mit.edu/projects/robots/aur/theater/theater.html>, Oct. 2009.
- [7] G. Hoffman, R. Kubat, and C. Breazeal, “A Hybrid Control System for Puppeteering a Live Robotic Stage Actor,” in *Proceedings of the 17th International Symposium on Robot and Human Interactive Communication (RoMan'08)*, Aug. 2008.
- [8] M. Goodrich, D. Olsen, J. Crandall, and T. Palmer, “Experiments in adjustable autonomy,” in *Proceedings of the IJCAI Workshop on Autonomy, Delegation and Control: Interacting with Intelligent Agents*, 2001.
- [9] Y. Bar-Cohen and C. Breazeal, *Biologically Inspired Intelligent Robots*, SPIE press, 2003.
- [10] M. Rosheim, *Robot Evolution: The Development of Anthrobotics*, Wiley and Sons, New York, 1994.
- [11] K. T. Ulrich and S. D. Eppinger, *Product Design and Development*, 2nd ed., McGraw-Hill, Boston, MA, 2000.
- [12] MIT Product Design Class Website, <http://web.mit.edu/2.744/>, Aug. 2010.
- [13] I. Hunter, J. M. Hollerbach, et al., *A Comparative Analysis of Actuator Technologies*, MIT Press, 1991.
- [14] M. Taddei, *Leonardo da Vinci's robots*, Leonardo3, 2007.
- [15] T. Jansen, *The Great Pretender*, 010 Publishers, 2007.
- [16] Theo Jansen Mechanism, http://www.mekanizmalar.com/theo_jansen.html, Aug. 2010.
- [17] AX1500 Motor Driver Manual, <http://www.roboteq.com/tech-support/manuals-and-software.html>, Aug. 2010.
- [18] J. González-Gómez and E. Boemo, “Motion of Minimal Configurations of a Modular Robot: Sinusoidal, Lateral Rolling and Lateral Shift,” in *Proceedings of CLAWAR 2005 (8th International Conference on Climbing and Walking Robots)*, London, Sept. 2005, Lecture Notes in Computer Science, Springer-Verlag, 2005.
- [19] SyRen 25 Motor Driver Manual, <http://www.dimensionengineering.com/datasheets/SyRen10-25.pdf>, Aug. 2010.
- [20] W. Dong, K. Lim, K. Nguyen Y. Goh, I. Chen, S. Yeo, and B. Duh, “A low-cost motion tracker and its error analysis,” in *2008 IEEE International Conference on Robotics and Automation*, Pasadena, California, May 2008.
- [21] X-CTU User Manual, http://ftp1.digi.com/support/documentation/90001003_A.pdf, Aug. 2010.
- [22] Wireless Bootloading for ATmega 168/328, http://www.sparkfun.com/commerce/tutorial_info.php?tutorials_id=122, Aug. 2010.
- [23] J. Horakova, J. Kelemen, “Robots between Fictions and Facts,” in *Intl Symposium on Computational Intelligence and Informatics*, 2006, pp. 21-39.
- [24] J. Reichardt, *Robots: Fact, Fiction, and Prediction: Viking Penguin*, 1978.

- [25] L.-P. Demers, "Machine Performers: Neither Agentic nor Automatic," in *Proceedings of the 5th ACM/IEEE International Conference on Human-Robot Interaction*, Osaka, Japan, Mar. 2010.
- [26] S. McCandless, Stanley, *A Method of Lighting the Stage (4th Edition)*, Theatre Arts Books, New York, 1958.
- [27] J. M. Gillette, *Designing With Light: An Introduction to Stage Lighting (4th Edition)*, McGraw Hill, 2003.
- [28] 3021 BuckPuck LED Driver Data Sheet, <http://www.luxdrive.com/download/?dltf&dmid=1109>, Aug. 2010.
- [29] P. Milgram and A. F. Kishino, "Taxonomy of Mixed Reality Visual Displays," *IEICE Transactions on Information and Systems*, E77-D (12), pp. 1321-1329, 1994.
- [30] C. Rojas, *Physical Computing Robot Tracking Installation*, <http://www.projectallusion.com/1/archives/12-2009/1.html>, Aug. 2010.
- [31] J. Stam, "Real-Time Fluid Dynamics for Games," in *Proceedings of the Game Developer Conference*, San Jose, CA, March 2003.
- [32] G. Hoffman, "Ensemble: Fluency and Embodiment for Robots Acting with Humans," Ph.D. thesis, MIT Media Laboratory, 2007.
- [33] P. Torpey, "Disembodied Performance: Abstraction of Representation in Live Theater," M.S. thesis, MIT Media Laboratory, 2008.
- [34] A. Pentland, "Social dynamics: Signals and behavior," in *Proceedings of the 3rd International Conference on Development and Learning (ICDL 2004)*, La Jolla, CA, USA, Oct. 2004.
- [35] J. A. Russell, "A circumplex model of affect," *Journal of Personality and Social Psychology*, Vol. 39, No. 6, pp. 1161-1178, 1980.
- [36] C. Breazeal, *Designing Social Robots*, pp. 157-184, MIT press, 2002.
- [37] D. Isla and B. Blumberg, "Low-level intelligence for low-level animation," Technical Sketches, *SIGGRAPH*, 2002.

APPENDIX A

FIRMWARE OF SOFA CONTROLLER

```
#include <Servo.h>

// pwm pins
#define OUTPUT_LED      6
#define OUTPUT_PIN_1   9
#define OUTPUT_PIN_2   10
#define OUTPUT_PIN_3   11

#define SINU_AMP_LOW    -1
#define SINU_AMP_HIGH   1

#define SERVO_LOW       0
#define SERVO_HIGH     179
#define SERVO_STOP      90

// half throttle (1/2 speed)
#define SERVO_FORWARD   135
#define SERVO_BACKWARD  45

// measured in microseconds
#define PULSE_MIN       1000
#define PULSE_MAX       2000

#define PERIOD          1500
#define DELAY           5
#define STEP            500

#define PHASE_1         (2*PI/3)*0
#define PHASE_2         (2*PI/3)*1
#define PHASE_3         (2*PI/3)*2

// LED lighting scale
#define LED_0           51*5
#define LED_1           51*4
#define LED_2           51*3
#define LED_3           51*2
#define LED_4           51*1
#define LED_5           51*0

// froward/backword
#define COMPZ_FACTOR    0.94

Servo m_controller_1, m_controller_2, m_controller_3;

void setup()
{
  m_controller_1.attach(OUTPUT_PIN_1, PULSE_MIN, PULSE_MAX);
  m_controller_2.attach(OUTPUT_PIN_2, PULSE_MIN, PULSE_MAX);
  m_controller_3.attach(OUTPUT_PIN_3, PULSE_MIN, PULSE_MAX);
```



```

stopFun();

Serial.begin(19200);
}

void loop()
{
  if (Serial.available() >= 0)
  {
    switch (Serial.read())
    {
      // forward
      case 'X':
        xStepForward();
        break;
      case 'Y':
        yStepForward();
        break;
      case 'Z':
        zStepForward();
        break;
      // backward
      case 'x':
        xStepBackward();
        break;
      case 'y':
        yStepBackward();
        break;
      case 'z':
        zStepBackward();
        break;

      // rotate
      case 'R':
        rotateFun();
        break;
      // move
      case 'M':
        moveFun();
        break;

      case '0':
        analogWrite(OUTPUT_LED, LED_0);
        break;
      case '1':
        analogWrite(OUTPUT_LED, LED_1);
        break;
      case '2':
        analogWrite(OUTPUT_LED, LED_2);
        break;
      case '3':
        analogWrite(OUTPUT_LED, LED_3);
        break;
      case '4':
        analogWrite(OUTPUT_LED, LED_4);
        break;
    }
  }
}

```

```

    case '5':
        analogWrite(OUTPUT_LED, LED_5);
        break;

    default:
        stopFun();
        break;
}
}
}

```

```

void stopFun()
{
    m_controller_1.write(SERVO_STOP);
    m_controller_2.write(SERVO_STOP);
    m_controller_3.write(SERVO_STOP);
}

```

```

void rotateFun()
{
    float com_factor, throttle_1, throttle_2, throttle_3;

    for (int i=0; i<=PERIOD; i++)
    {
        com_factor = 2*PI*i/PERIOD;

        throttle_1 = mapFloat(sin(com_factor+PHASE_1), SINU_AMP_LOW, SINU_AMP_HIGH,
                               SERVO_LOW, SERVO_HIGH);
        throttle_2 = mapFloat(sin(com_factor+PHASE_2), SINU_AMP_LOW, SINU_AMP_HIGH,
                               SERVO_LOW, SERVO_HIGH);
        throttle_3 = mapFloat(sin(com_factor+PHASE_3), SINU_AMP_LOW, SINU_AMP_HIGH,
                               SERVO_LOW, SERVO_HIGH);

        if (throttle_1>0) {throttle_1 = throttle_1*COMPZ_FACTOR;}
        if (throttle_2>0) {throttle_2 = throttle_2*COMPZ_FACTOR;}
        if (throttle_3>0) {throttle_3 = throttle_3*COMPZ_FACTOR;}

        m_controller_1.write(throttle_1);
        m_controller_2.write(throttle_2);
        m_controller_3.write(throttle_3);

        delay(DELAY);
    }
}

```

// Same as rotateFun() except for the phase difference between 3 motors

```

void moveFun()
{
    float com_factor, throttle_1, throttle_2, throttle_3;

    for (int i=0; i<=PERIOD; i++)
    {
        com_factor = 2*PI*i/PERIOD;

        throttle_1 = mapFloat(sin(com_factor+PHASE_1), SINU_AMP_LOW, SINU_AMP_HIGH,

```

```

        SERVO_LOW, SERVO_HIGH);
throttle_2 = mapFloat(sin(com_factor+PHASE_1), SINU_AMP_LOW, SINU_AMP_HIGH,
        SERVO_LOW, SERVO_HIGH);
throttle_3 = mapFloat(sin(com_factor+PHASE_2), SINU_AMP_LOW, SINU_AMP_HIGH,
        SERVO_LOW, SERVO_HIGH);

if (throttle_1>0) {throttle_1 = throttle_1*COMPZ_FACTOR;}
if (throttle_2>0) {throttle_2 = throttle_2*COMPZ_FACTOR;}
if (throttle_3>0) {throttle_3 = throttle_3*COMPZ_FACTOR;}

m_controller_1.write(throttle_1);
m_controller_2.write(throttle_2);
m_controller_3.write(throttle_3);

delay(DELAY);
}
}

void xStepForward()
{
m_controller_1.write(SERVO_FORWARD*COMPZ_FACTOR);
delay (STEP);
m_controller_1.write(SERVO_STOP);
}

void yStepForward()
{
m_controller_2.write(SERVO_FORWARD*COMPZ_FACTOR);
delay (STEP);
m_controller_2.write(SERVO_STOP);
}

void zStepForward()
{
m_controller_3.write(SERVO_FORWARD*COMPZ_FACTOR);
delay (STEP);
m_controller_3.write(SERVO_STOP);
}

void xStepBackward()
{
m_controller_1.write(SERVO_BACKWARD);
delay (STEP);
m_controller_1.write(SERVO_STOP);
}

void yStepBackward()
{
m_controller_2.write(SERVO_BACKWARD);
delay (STEP);
m_controller_2.write(SERVO_STOP);
}

void zStepBackward()
{
m_controller_3.write(SERVO_BACKWARD);

```

```
delay (STEP);
m_controller_3.write(SERVO_STOP);
}

// map function
float mapFloat(float x, float in_min, float in_max, float out_min, float out_max)
{
  return (x-in_min)*(out_max-out_min)/(in_max-in_min)+out_min;
}
```

APPENDIX B

FIRMWARE INTERFACING WITH ACCELEROMETER

```
#include <math.h>

/* Read an LIS3LV02DQ (3-axis accelerometer)*/

#define SSNT1 10 // chip seselect(slave select), active low; change 4 intergration
#define MOSI 11 // SDA(master out, slave in)
#define MISO 12 // SDO(master in, slave out)
#define SCLK 13 // SPI clock

/* -----
 * Function name: char spi_transfer(volatile char)
 * Function description:
 * Note: The ATmega168 has a register called SPDR that, when written to, begins
 * an SPI transaction. Once you start a transaction, you have a choice of two
 * ways to handle it. One is to simply wait around until the transaction is over,
 * indicated by the SPIF bit being set. The other is to set up an interrupt
 * vector for this bit, which will result in a designated function being called
 * when the interrupt occurs. Performing the actual transaction over the SPI bus
 * is handled largely in hardware.
 * -----
 */
char spi_transfer(volatile char data) {
    SPDR = data;

    // Loop right here until the transaction is complete. the SPIF bit is the SPI
    // Interrupt Flag. When interrupts are enabled, and the SPIE bit is set
    // enabling SPI interrupts, this bit will set when the transaction is finished.
    while (!(SPSR & (1<<SPIF))){}

    // received data appears in the SPDR register
    return SPDR;
}

/* -----
 * Function name: char read_register(char)
 * Function description: reads a register
 * -----
 */
char read_register(char register_name) {
    char in_byte;

    // need to set bit 7 to indicate a read
    register_name |= 128;

    // SS is active low
    digitalWrite(SSNT1, LOW);

    // send the address of the register we want to read first
    spi_transfer(register_name);
}
```

```

// send nothing, but here's when the device sends back the register's value as an 8 bit byte
in_byte = spi_transfer(0);

// deselect the device
digitalWrite(SSNT1, HIGH);

return in_byte;
}

/* -----
 * Function name: void write_register(char)
 * Function description: writes a register
 * -----
 */
void write_register(char register_name, byte data) {
// clear bit 7 to indicate we're doing a write
register_name &= 127;

// SS is active low
digitalWrite(SSNT1, LOW);

// send the address of the register we want to write
spi_transfer(register_name);

// send the data we're writing
spi_transfer(data);

digitalWrite(SSNT1, HIGH);
}

/* -----
 * Fun name: void self_test()
 * Fun desc: self test
 * -----
 */
void self_test(){
byte in_byte = 0;

// query the WHO_AM_I register of the LIS3LV02DQ
// this should return 0x3A (0x3A HEX = 58 DEC), a factory setting
in_byte = read_register(15);

if (in_byte != 58) {
Serial.print("ERROR, WHO_AM_I [");
Serial.print(in_byte, HEX);
Serial.println("]");
}
}

/* -----
 * Fun name: void setup_spi_com ()
 * Fun desc: configures common SPI pins
 * -----
 */
void setup_spi_com(){
pinMode(MOSI,OUTPUT);

```

```

pinMode(MISO,INPUT);
pinMode(SCLK,OUTPUT);
}

/* -----
* Fun name: void setup_spi_acc ()
* Fun desc: start up the device, this essentially activates the device, powers
*           it on, enables all axes, and turn off the self test
* -----
*/
void setup_spi_acc(){
pinMode(SSNT1,OUTPUT);
digitalWrite(SSNT1,HIGH); //disable device
pinMode(SSNT1, OUTPUT);

// Set the SPCR register to 01010000; interrupt disabled, spi enabled, msb 1st,
// master, clk low when idle, sample on leading edge of clk, system clock/4 rate
SPCR = (1<<SPE)|(1<<MSTR)|(1<<CPOL)|(1<<CPHA);

self_test();

// CTRL_REG1 set to 10000111
write_register(0x20, 135);

self_test();

delay(250);
}

/* -----
* Fun name: setup()
* Fun desc: main function
* -----
*/
void setup() {
Serial.begin(9600);

setup_spi_com();
setup_spi_acc();
}

void loop() {
int x_val, y_val, z_val;
byte x_val_l, x_val_h, y_val_l, y_val_h, z_val_l, z_val_h;
// float grav, pitch, roll;

// read the outx register
x_val_h = read_register(0x29); //Read outx_h; the sign in 12 bit mode
x_val_l = read_register(0x28); //Read outx_l
x_val = x_val_h;
x_val <<= 8;
x_val += x_val_l;

y_val_h = read_register(0x2B); //Read outy_h
y_val_l = read_register(0x2A); //Read outy_l
y_val = y_val_h;

```

```

y_val <<= 8;
y_val += y_val_l;

z_val_h = read_register(0x2D); //Read outz_h
z_val_l = read_register(0x2C); //Read outz_l
z_val = z_val_h;
z_val <<= 8;
z_val += z_val_l;

// grav = sqrt(square(float(x_val))+square(float(y_val))+square(float(z_val)));
// pitch = asin(float(x_val)/grav);
// roll = asin(float(y_val)/(grav*cos(pitch)));

Serial.print(x_val, DEC);
Serial.print(44, BYTE);
Serial.print(y_val, DEC);
Serial.print(44, BYTE);
Serial.print(z_val, DEC);
Serial.print(59, BYTE);

// Serial.print(pitch*180/PI, DEC);
// Serial.print(44, BYTE);
// Serial.println(roll*180/PI, DEC);

self_test();

// delay(1000);
}

```


APPENDIX C

CIRCUIT DIAGRAM OF LED CONTROL BOARD

